

Documentum™ WebPublisher Pro AlterCast Integration

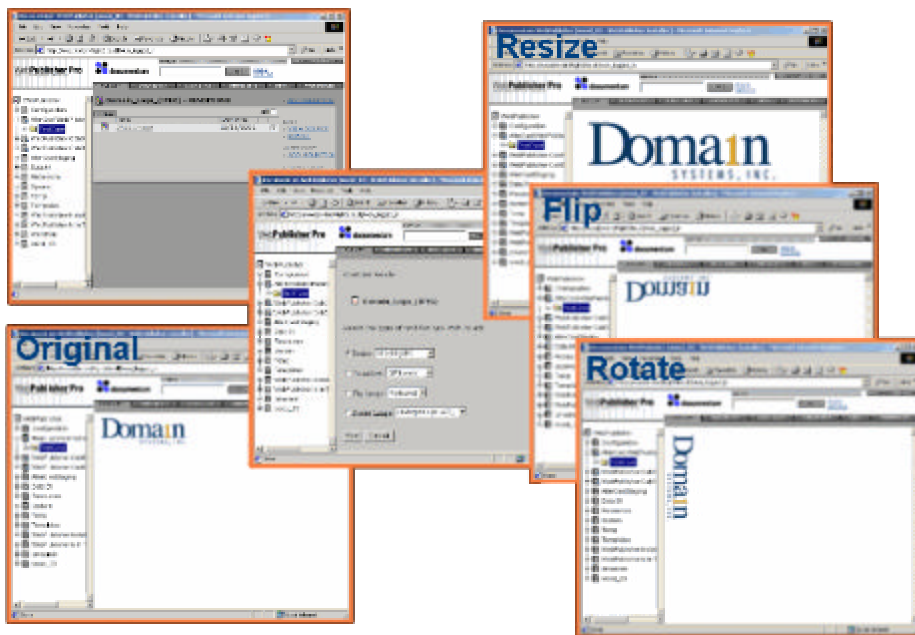
Documentum™ WebPublisher Pro to Adobe™ AlterCast Server Integration

The **WebPublisher Pro AlterCast Integration** is for customers that require a fast addition and deployment of Adobe™ AlterCast Server capabilities to their Documentum™ *Web Content Management (WCM) Edition* deployment.

The **WebPublisher Pro AlterCast Integration** is designed to provide the features of the Adobe™ AlterCast Server to WCM authors and editors.

The **WebPublisher Pro AlterCast Integration** is fully configurable. It allows you to increase/decrease the AlterCast features available to users, with minimal integration effort.

The **WebPublisher Pro AlterCast Integration** was designed and developed using Adobe™ AlterCast Server, Documentum™ 4i, the latest Web, and Java technologies.



What does WebPublisher Pro AlterCast Integration do?

This application provides users the ability to use Adobe™ AlterCast Server capabilities for an image associated with a document in Documentum™. The extent of the integration includes an easy to follow user interface fully integrated with Documentum™ **WebPublisher Pro**, and simple selection mechanism for the user to define the operation to be performed (i.e.: the output of the AlterCast Server process). The resulting image is handled as a new Documentum rendition an added back to the system as the AlterCast image rendition of the format specified by the configuration.

Application features include Resize, Rotate, Flip, and Transform/Translate to other file formats.

Application is customizable to offer all other supported AlterCast features.

Key Benefits

- **Fast and easy to deploy.**
- **Saves time and eliminates common errors associated with image manipulation for common design tasks by users.**
- **Reduces turn around for web sites maintained through Documentum WCM Edition.**
- **Direct and quick access to rendering functionality from WebPublisher Pro.**
- **Reliable and easy to use.**

Available through Domain Systems

Eastern Regional Office
21800 W. 10 Mile Rd.
Suite 119
Southfield, MI 48075
248- 945-1115

Western Regional Office
670 West Shepard Lane
Suite 103
Farmington, Utah 84025
801-447-3777

www.domainsi.com • sales@domainsi.com • 801-447-3777